

Pork Production

Introductions



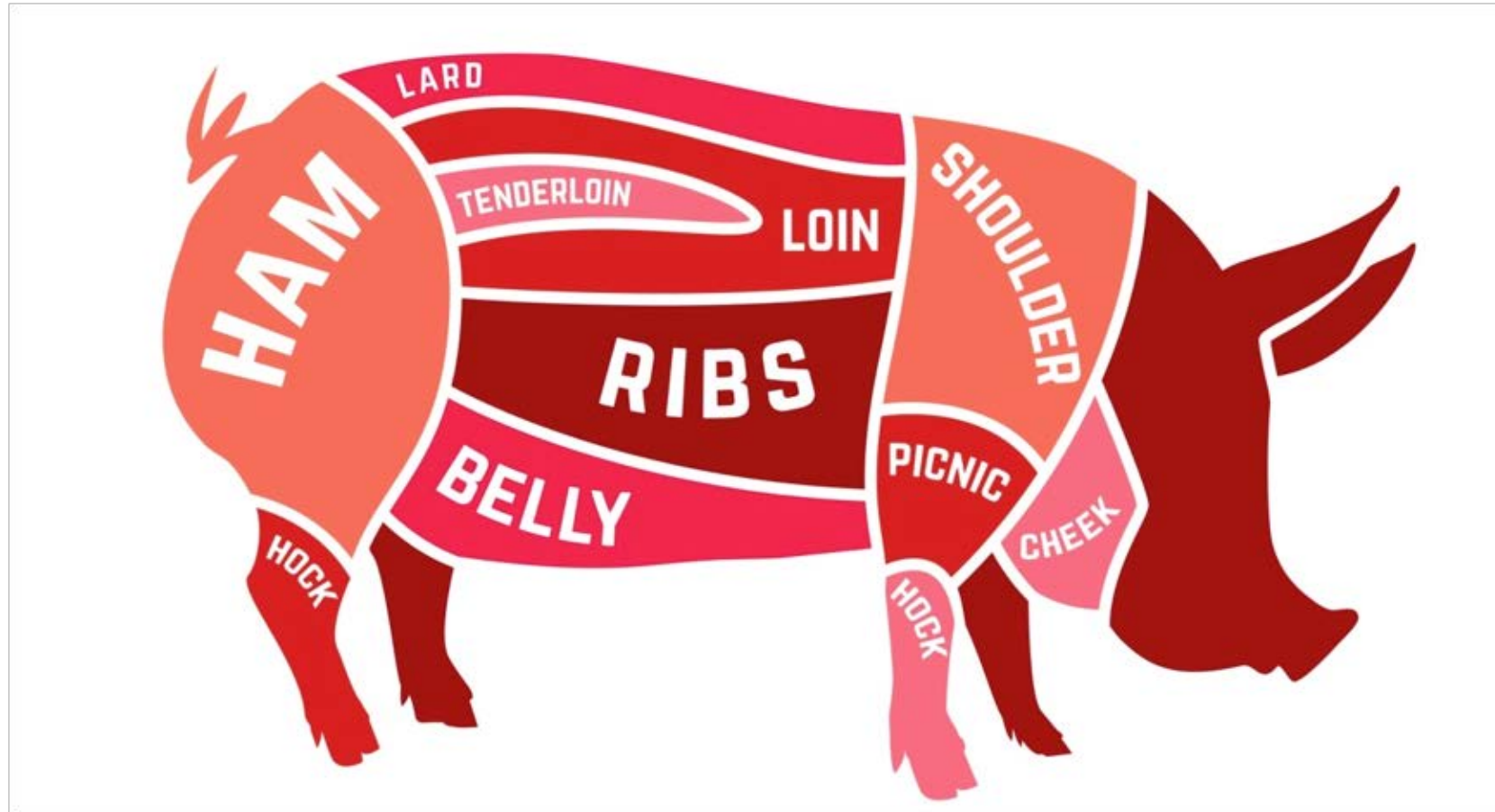
What is Agriculture?



Raise your hand if...



... if you have eaten a pork product today.



... if you have ever been to a farm where there were pigs.



...if you like bacon!!



Vocabulary

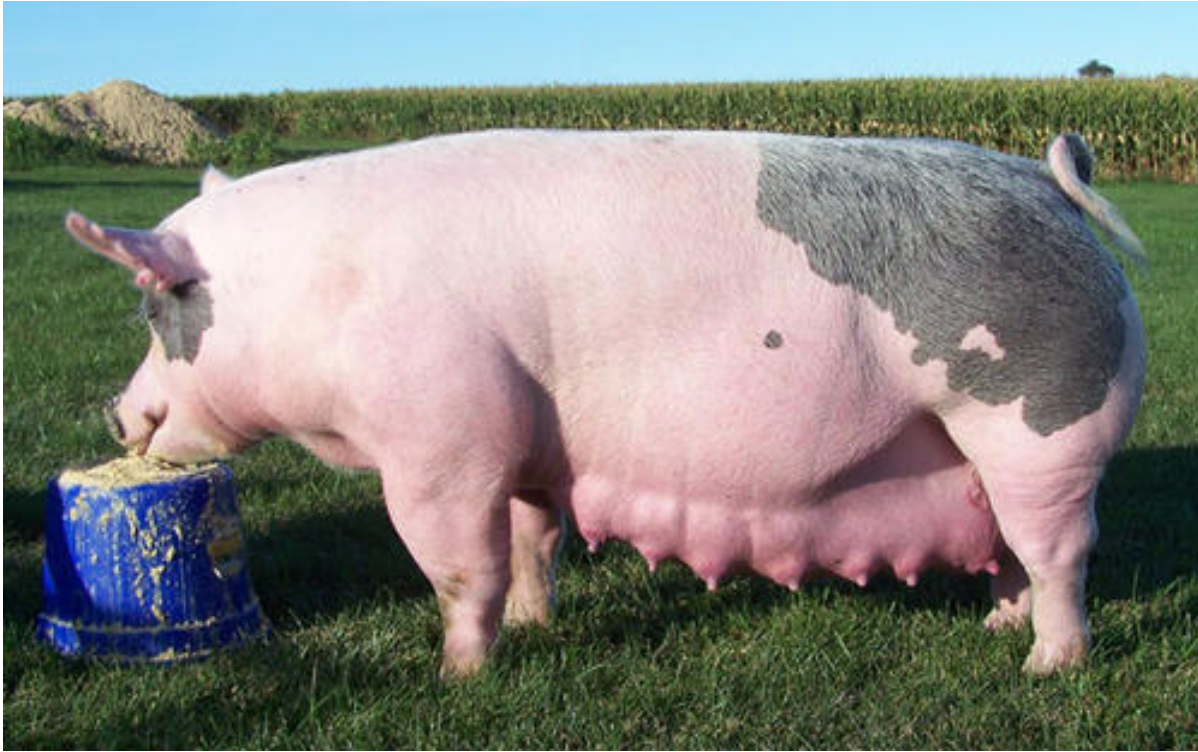
Boar - a male that can reproduce



Barrow - a male that has been castrated



Sow - female who has had piglets



Gilt - Female who has not had piglets yet



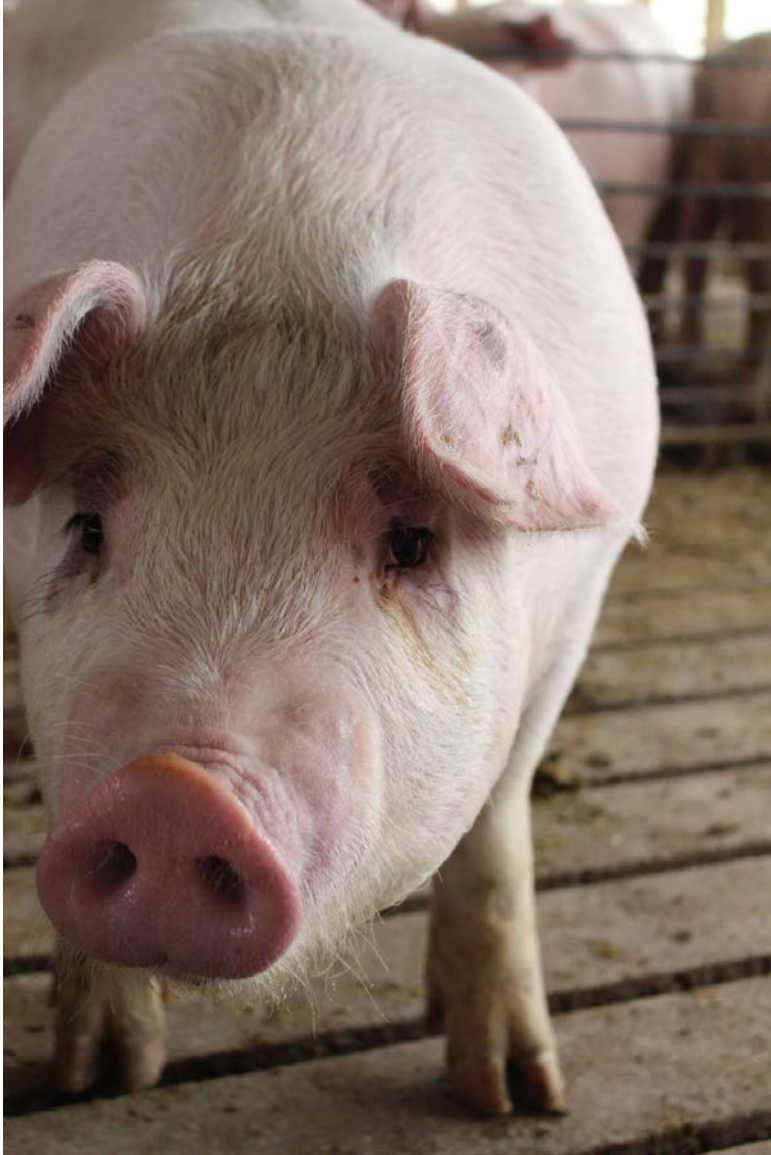
Piglet - baby pig



Weaned Pig- Young pig in feeding operations which are being grown to market weight.



Market Pig- Pig being prepared for slaughter



Farrow- giving birth to piglets





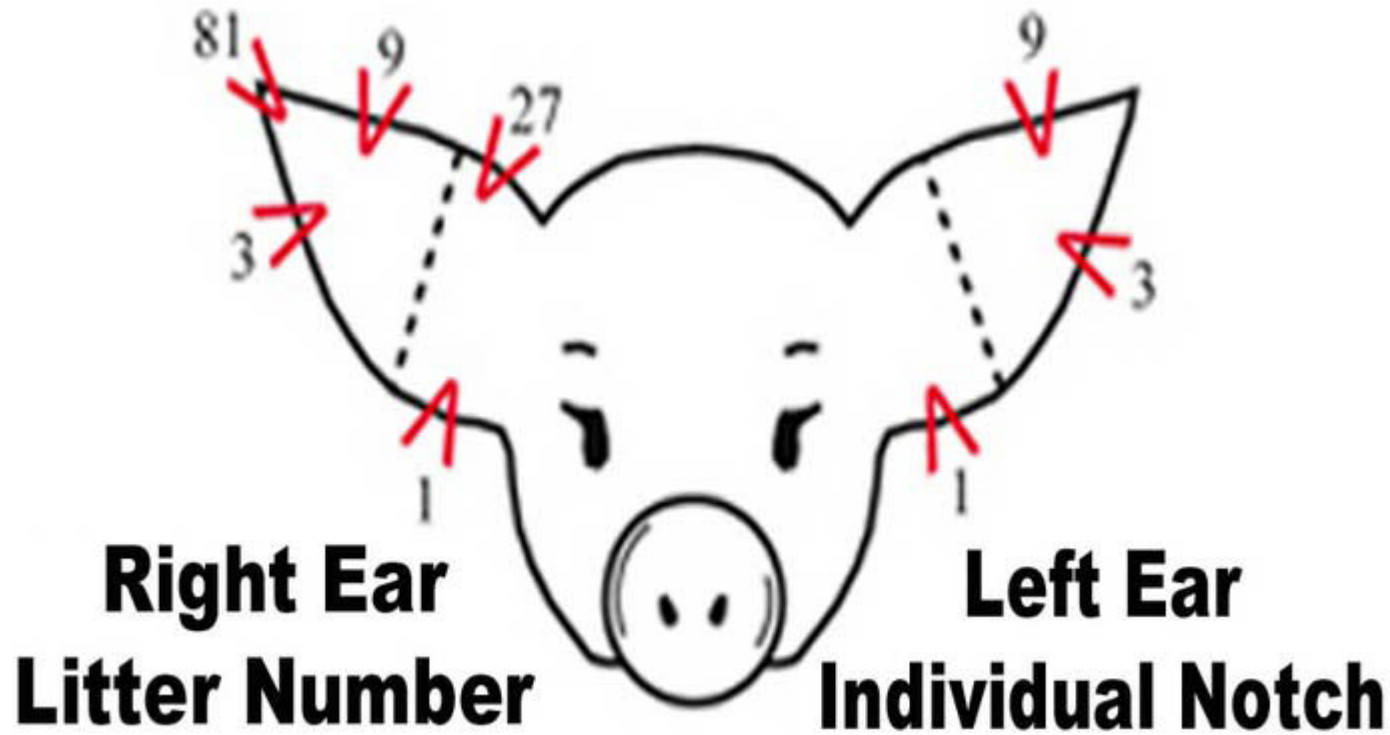
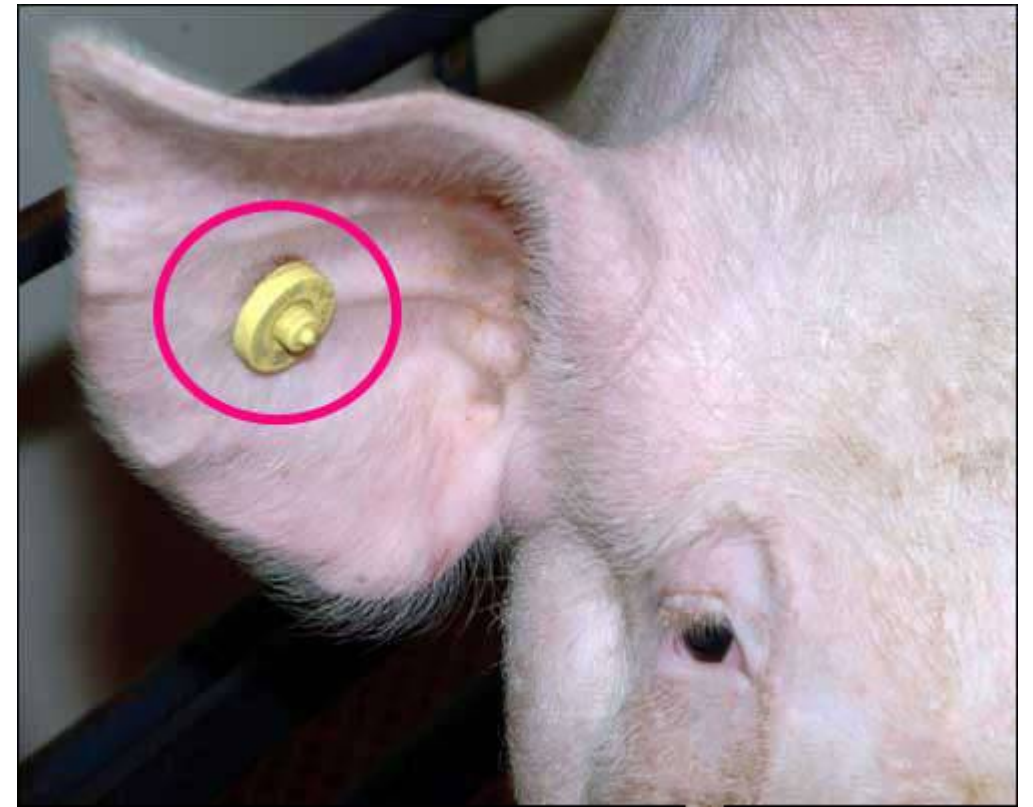
Gestation-
amount of time that a
pig is pregnant (115
days)



Litter- Group of piglets born at the same time
by the same sow



Ear tags, ear notching and tattoos are all used for identification of an animal .



A bright blue sky with scattered white cumulus clouds. The clouds are of various sizes and are more concentrated towards the right side of the frame. The overall scene is a clear, sunny day.

What do pigs eat?

Pigs eat **CORN** and **SOYBEAN** meal that is mixed with **vitamins** and **minerals**. The feed is made at a feed mill.



A 250 pound pig will eat about 10 pounds of feed per day and gain 2-3 pounds per day



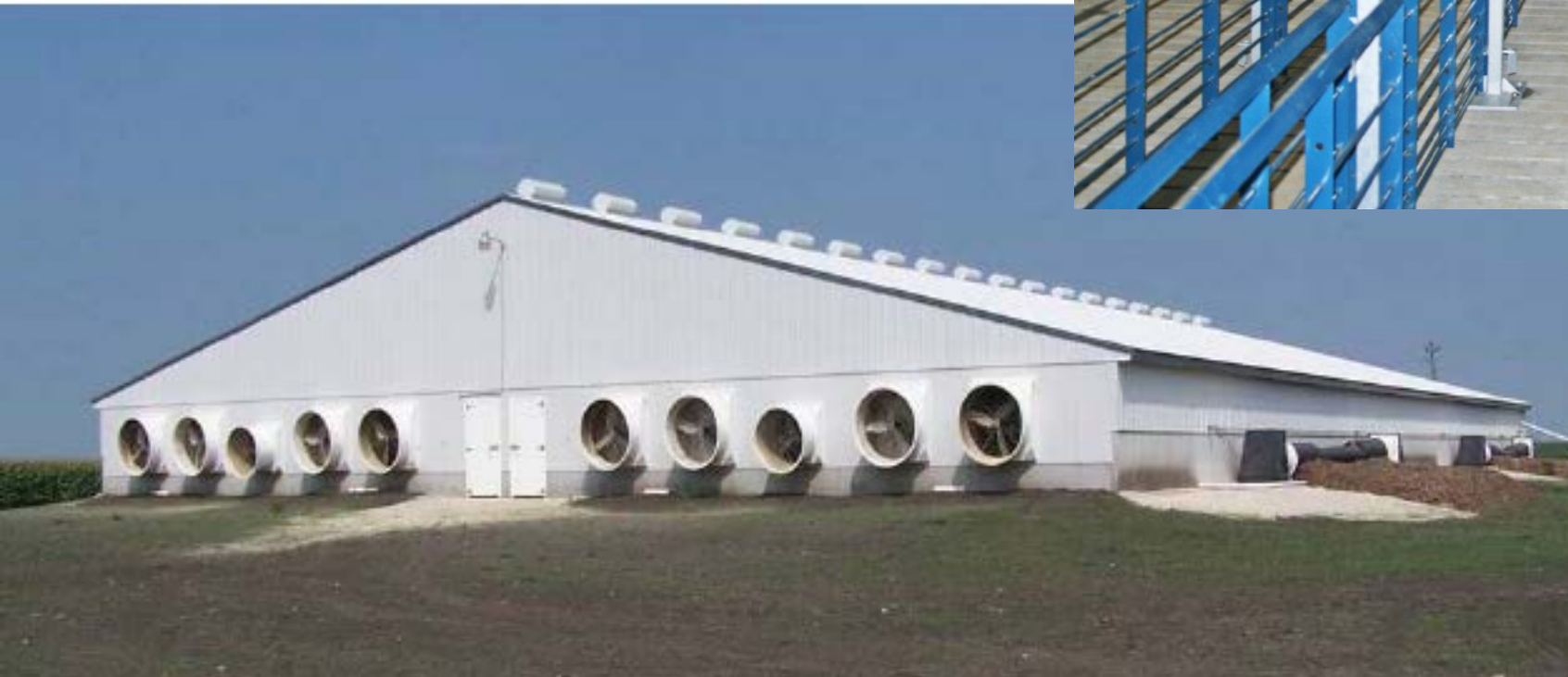
A 250 pound pig drinks about 3-5 gallons of water a day.



A bright blue sky with scattered white cumulus clouds. The clouds are of various sizes and are more densely packed on the right side of the image. The overall scene is a clear, sunny day.

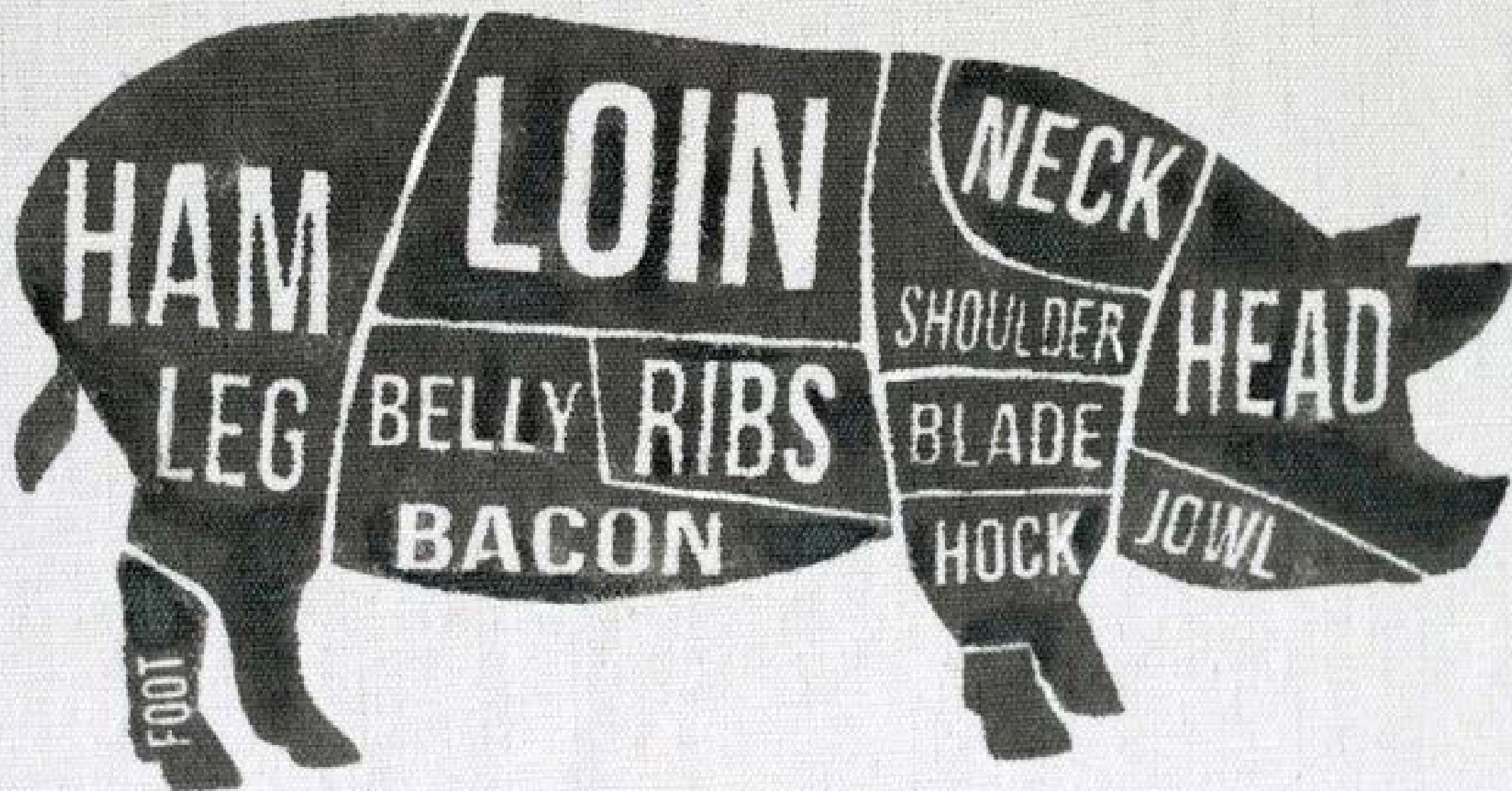
Where do pigs live?

Pigs live inside **energy efficient buildings** that help to protect them from all of the outdoor elements.



A bright blue sky with scattered white clouds. The clouds are fluffy and vary in size, with some appearing more prominent than others. The overall scene is a clear, sunny day.

Can you name a cut of meat
that comes from a pig?





Everything but the OINK!



There are over
200 byproducts
that come from
a pig!

A few products that come from a pig!

- Footballs
- Insulin
- Toothpaste
- Heart Valves
- Glue
- Crayons
- Chalk
- Pet Food
- And many, many more!



The background of the image is a clear, vibrant blue sky filled with numerous white, fluffy clouds of varying sizes. The clouds are scattered across the frame, with some appearing more prominent and closer to the viewer than others. The overall scene is bright and cheerful, suggesting a sunny day.

Trivia!!!

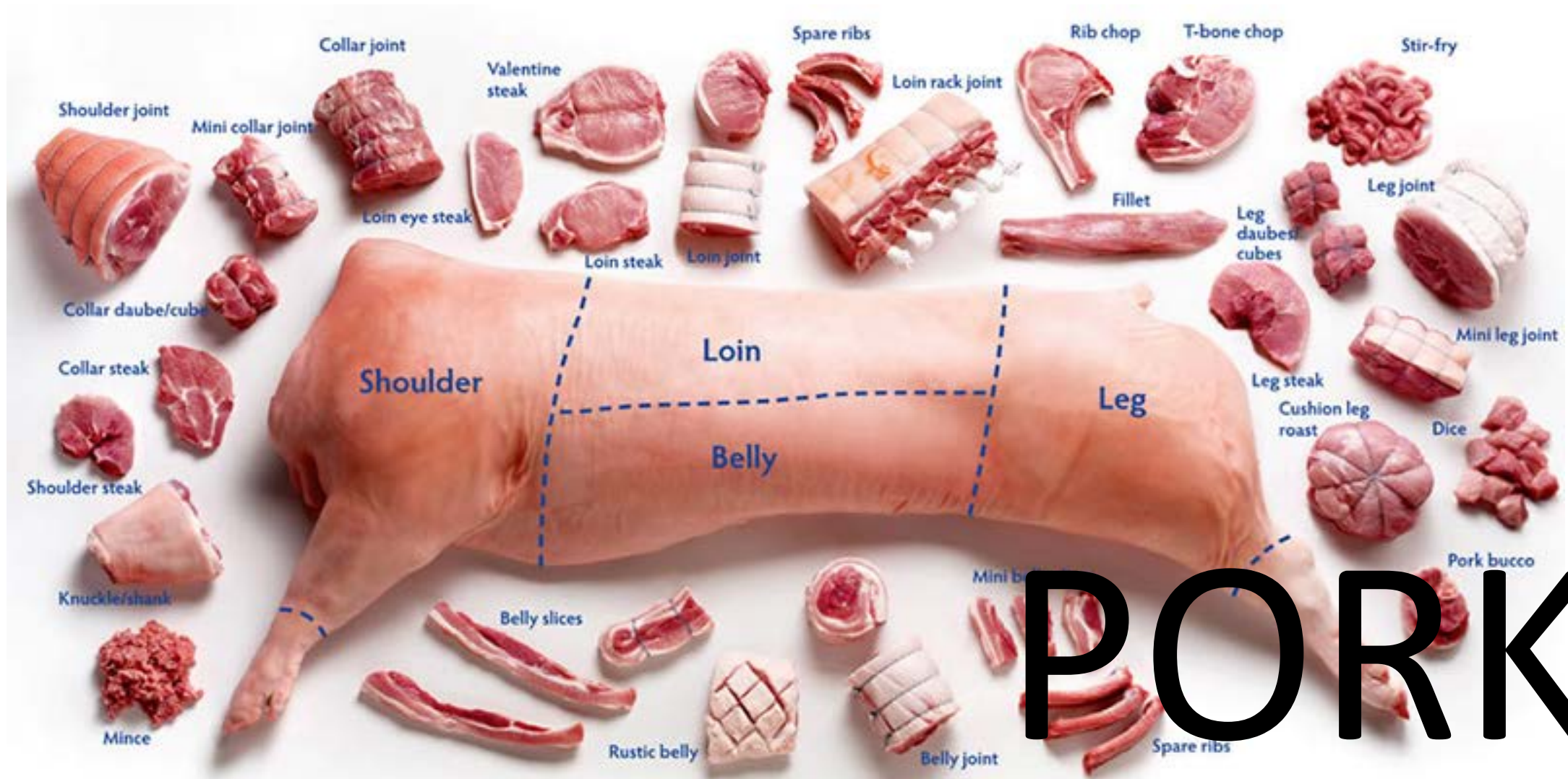
Before we start....

- **Raise your hand**
- **Wait to be called on**
- **Let everyone get a chance to answer a question**
- **Have fun!!!**
- **Learn something new and share it with your family!**

What month is National Pork Month?



What is the most commonly consumed meat
in the world?

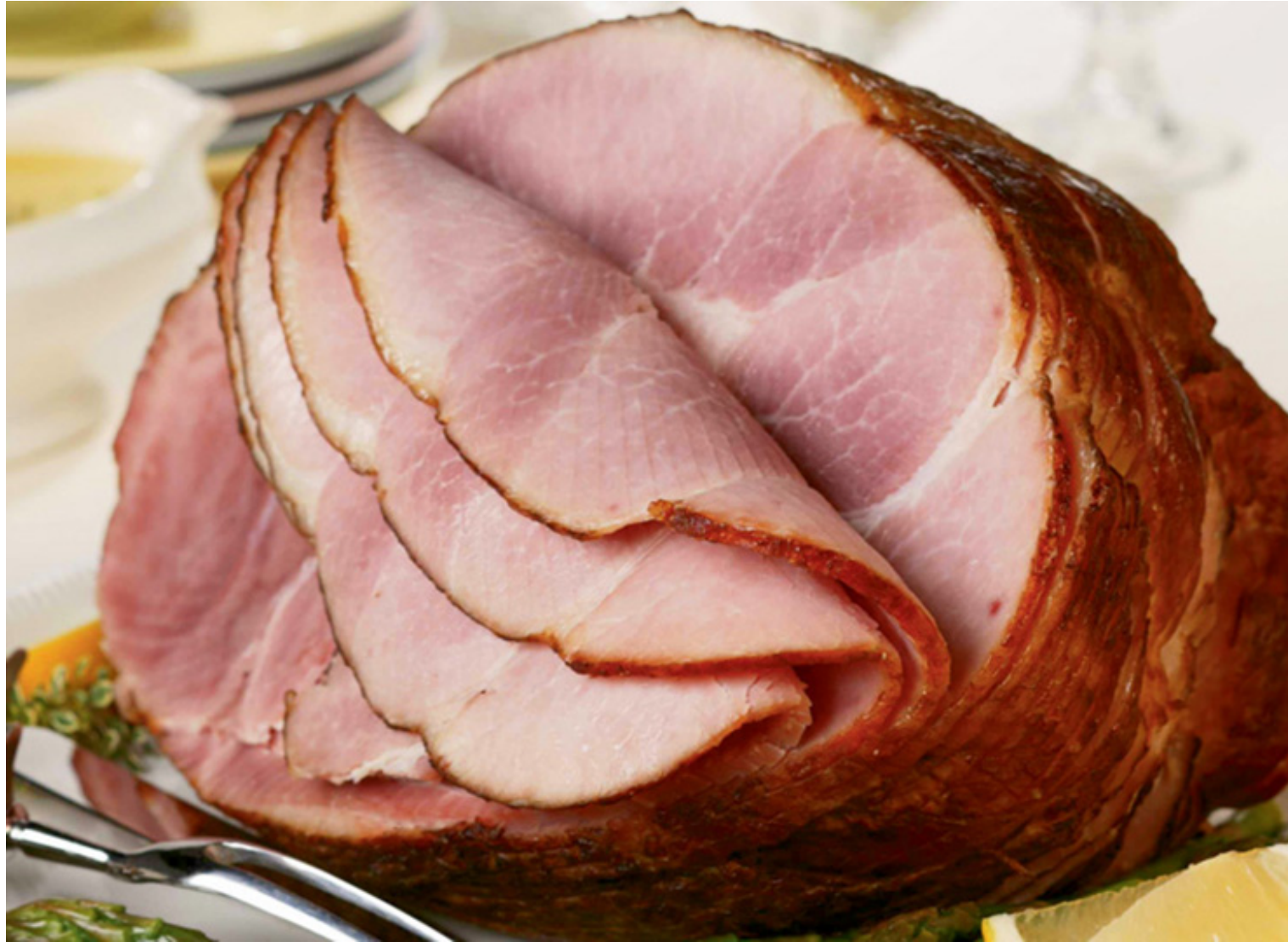




How many pigs will
an average
American eat in
their lifetime?

28 pigs...
that's a lot
of pork!!!

HAM is the number one meat eaten on sandwiches in the US.



Did you know???

A pig's squeal can be as loud as **115 decibels!** That's 3 decibels higher than the sound of a supersonic airliner.



What is the weight of the **worlds heaviest pig?**



Big Bill was 2,552 pounds.

A pig can run a SEVEN minute mile.





A 275 pound pig
on average will
produce **16**
pounds of
bacon.

What continent
are pigs
NOT found on?

ANTARCTICA



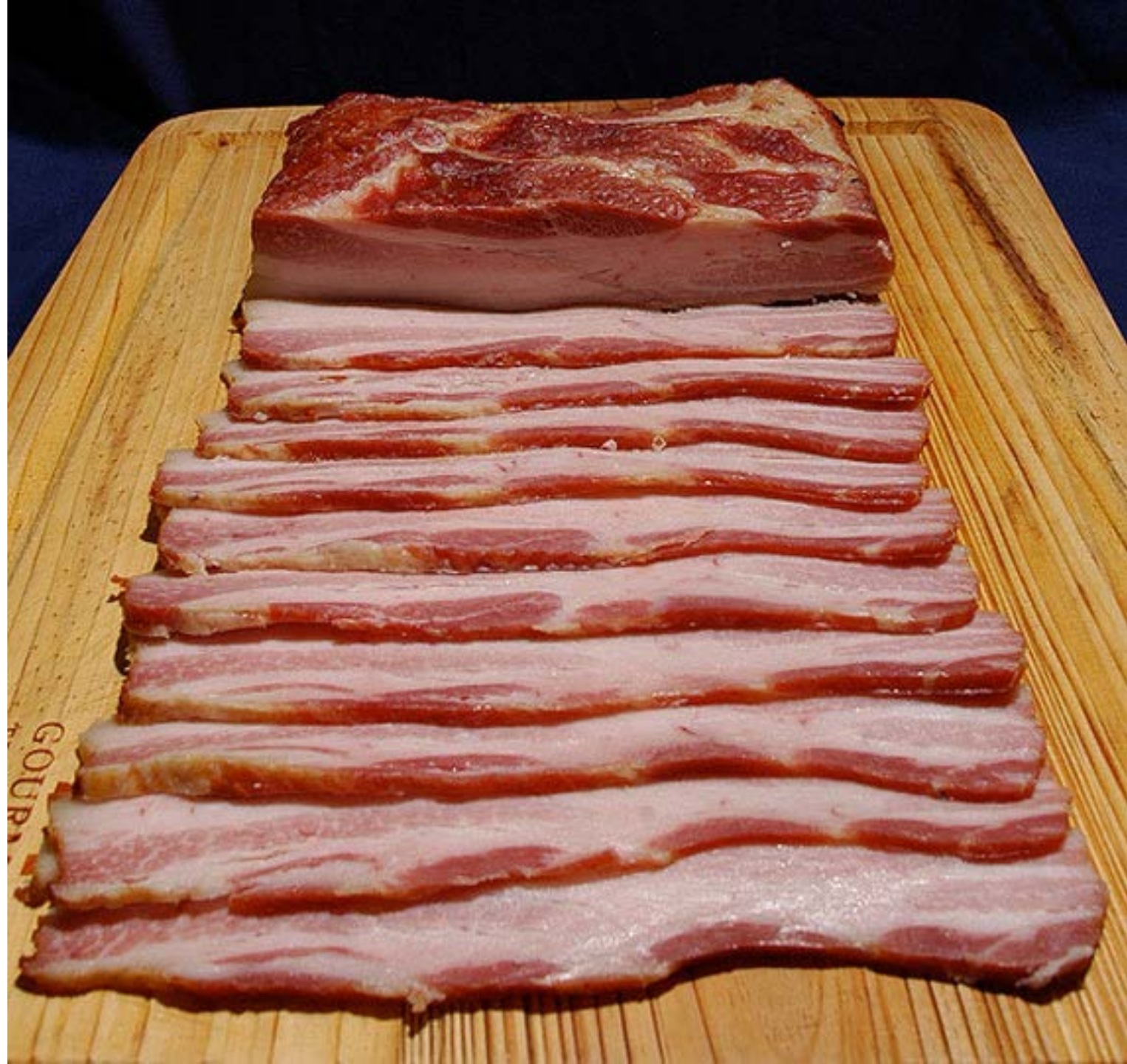
How many pigs are produced and marketed in the US each year?



115 million

Where on the
pig does bacon
come from?

The Belly





A pig does not
SWEAT.

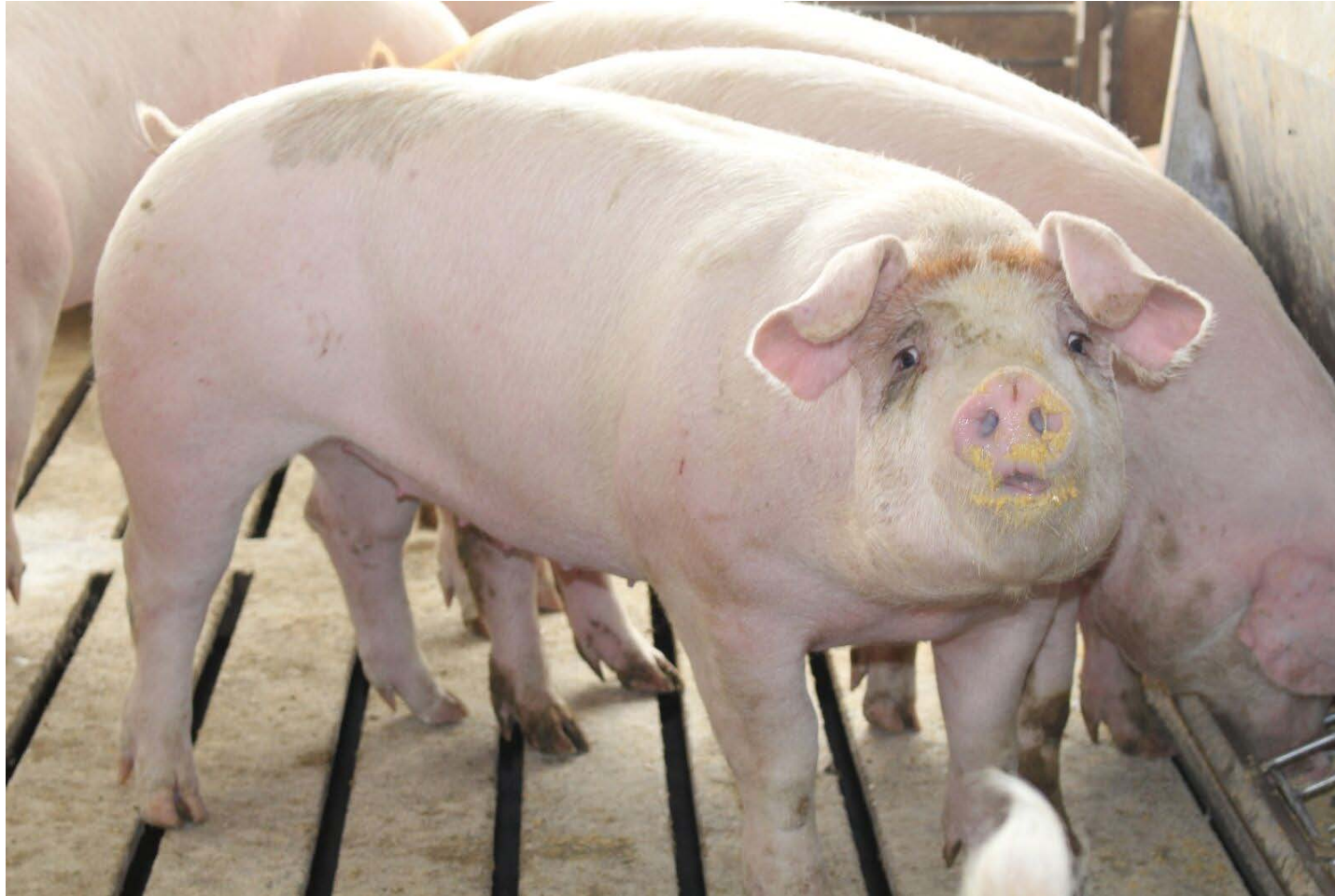
Pigs have hardly any sweat glands. It is important for farmers to keep their pigs nice and cool in the hot summer!

There are about _____
billion pigs on earth!

2



DID YOU KNOW...



Pigs do not “eat like pigs” or “pig out.” They prefer to eat slowly and savor their food.



How many **litters** of
pigs can a sow
produce in a year?

Just over 2
litters per
year

Pigs are fed in a finishing building until they weigh between **240-275 lbs**. Then they are sold to market.



The background of the image is a clear, vibrant blue sky filled with numerous white, fluffy clouds of varying sizes. The clouds are scattered across the frame, with some appearing more prominent and closer to the viewer than others. The overall scene is bright and airy, suggesting a sunny day.

PORK PUZZLE!

INSTRUCTIONS:

- We will hand out a puzzle to each of you!
- Work on putting together your meat cuts puzzle quietly!
- Once you have completed your puzzle you can look at your coloring book and handouts!

